

dose-map™ dosimetry system

easy to use verification of a blood irradiator's performance

description

Dose-map™ dosimetry system provides a simple and proactive method of assuring the dose delivered by a blood irradiator. It's a quick and easy procedure anyone who knows how to operate a blood irradiator can do. The Dose-map™ cassette is placed inside the irradiator for one cycle. Inside the cassette is a piece of gafchromic™ film, the world's highest resolution dosimeter. The gafchromic™ film allows for a clear and accurate picture of how the irradiator is operating during a normal irradiation cycle. Additionally, the Dose-map™ dosimeters measurements are indexed to alanine which is co-irradiated with the gafchromic™ film. Alanine is an internationally recognized dosimetry transfer standard. After irradiation, the Dose-map™ cassette is simply returned to Ashland for analysis and you will be issued a Dose-Mapping report.

as easy as 1-2-3

1. receive your Dose-map™ cassette from Ashland
2. place the cassette into the canister and run a normal cycle
3. send the irradiated cassette back to Ashland

exhibit: 1



application

Once the irradiated cassette is received, Ashland will analyze the film inside the cassette and send you a report. This report will have a dose distribution chart (exhibit: 2) and a color-coded dose contour plot (exhibit: 3) that shows the distribution of the absorbed dose in the canister.

exhibit: 2

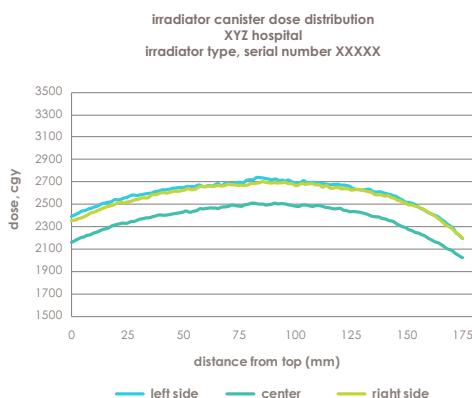
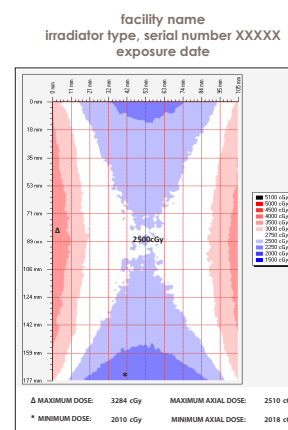
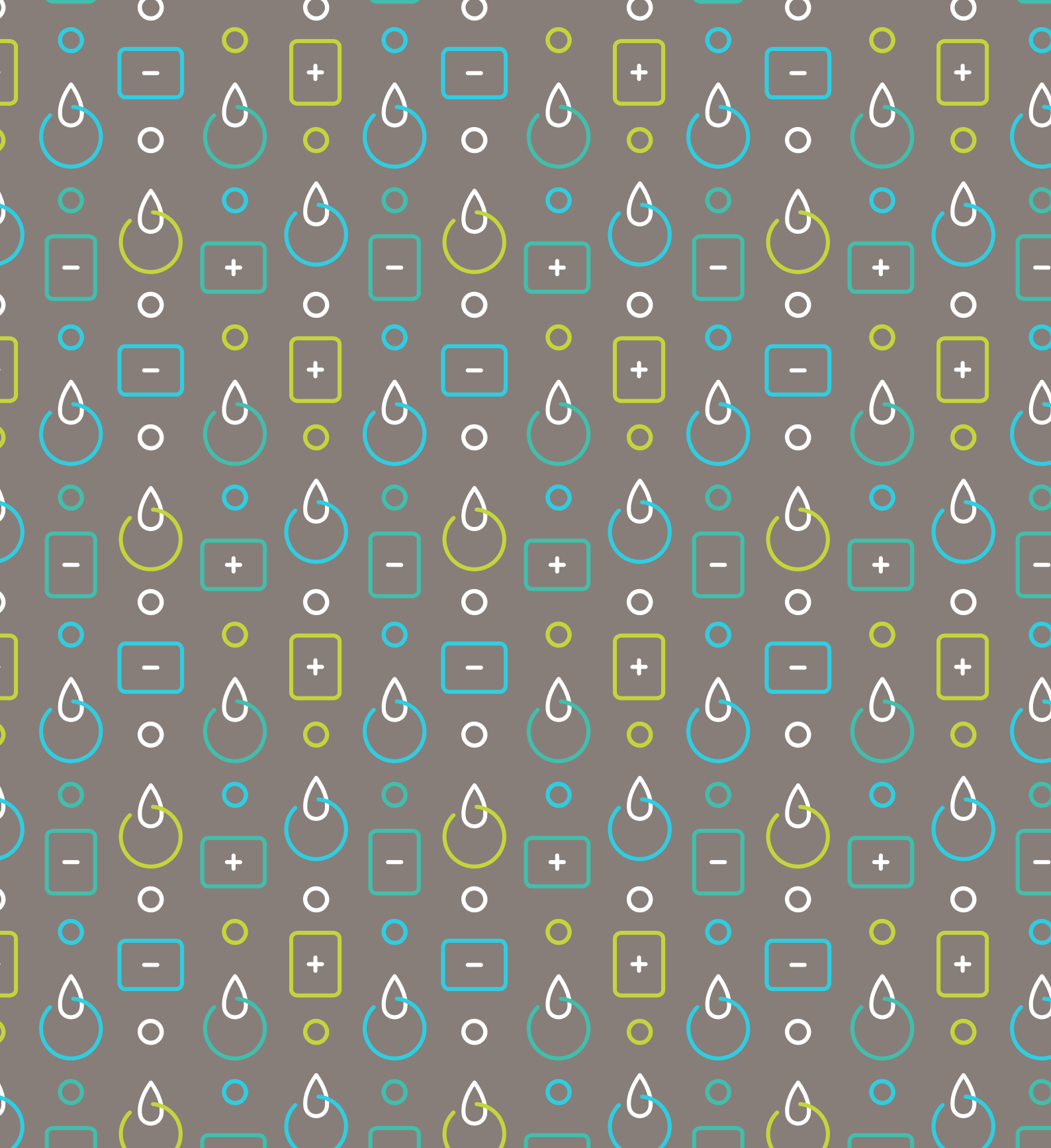


exhibit: 3





for U.S. orders and inquiries email:
diagnosticfilmorders@ashland.com

for international orders and inquiries email:
diagnosticfilmordersNA@ashland.com

[ashland.com/contact](https://www.ashland.com/contact)

® Registered trademark, Ashland or its subsidiaries, registered in various countries

™ Trademark, Ashland or its subsidiaries, registered in various countries

©2023, 2018, Ashland / PHA18-109.1

The information contained in this document is intended for use only by persons having technical skill and at their own discretion and risk. All statements, information and data presented herein are believed to be accurate and reliable, but are not to be taken as a guarantee, an express warranty, or an implied warranty of merchantability or fitness for a particular purpose, or representation, express or implied, for which Ashland and its subsidiaries assume legal responsibility. Certain end uses of our products may be regulated pursuant to rules governing medical devices and any other non-medical device end use applications. A purchaser must make its own determination of our products' suitability for purchaser's use, whether alone or in conjunction with other products, the protection of the environment, and the health and safety of its employees and customers. It is also the purchaser's responsibility to comply with all applicable legal and regulatory requirements (including those governing medical devices and/or any non-medical devices). We make no warranty against infringement of any patents by reason of purchaser's use of any of our products.

